



TOWN OF LYME  
LYME LAND CONSERVATION  
TRUST (TOL/LLCT) HUNTING  
POLICIES 2020



## General

1. Fluorescent orange is highly recommended for all persons and their dogs September 1 through January 31.
2. All state hunting laws and regulations apply. For specifics on the State Regulations, consult the current CT DEEP Hunting and Trapping and Migratory Bird Hunting guides
3. Consent to hunt may be issued for those properties shown in the accompanying map and Hunting Season Chart.
4. The maximum number of hunters on Mt. Archer Woods/Eno /Jewett Preserves combined properties (669 acres) at any one time will be 15 (firearm) and 20 (bow). On properties 20 -100 acres the maximum numbers of hunters will be 1 (firearm) and 2 (bow) per 10 acres
5. Hunters are required to know the boundaries of the property being hunted, will not hunt within 100' of the boundaries and abide by the 500' & 250' setbacks from structures.  
**For Mt. Archer Woods** this includes the boundaries of the two private properties and the location of the stone wall which separates the hunting from the no hunting areas. Yellow diamond markers are visible as one approaches the hunting area from the non-hunting area; white diamond markers are visible as one approaches the non-hunting area from the hunting area)
6. Tree stands must be at least 100' from hiking trails, 100' from boundaries, and face away from boundaries and structures. Remove tree stands after the season is over.
7. No hunting on Saturday or Sunday; all Preserves are open to non-hunting users on the weekends.
8. In general motorized vehicles are not allowed on any of the Preserves. In this program, however, they may be used to facilitate the removal of harvested deer.

## Seasons - see Hunting Season Chart Below

9. Consent to hunt Spring turkey (late April to late May, ½ hour before sunrise to noon) restricted to Monday through Thursday. Be aware that the preserves remain open to hikers and other users. Do not hunt within 40 yards of hiking trails. During this season bow only permitted in the Jewett, Mt Archer or Eno Preserves.
10. Consent to hunt resident goose may be granted on Hand-Smith in September.
11. Consent to bow hunt deer/turkey is restricted to Monday through Thursday. Be aware that preserves will remain open to hikers and other users every day. Do not hunt within 40 yards of hiking trails.
12. Deer/turkey bow hunting will not be allowed during the deer/firearm season.
13. Consent to hunt deer with firearm including muzzleloader is restricted to Monday through Friday; on these days preserves will be closed to other users. The TOL/LLCT observes the State Land Muzzleloader Season Dates.
14. The general public will be notified of these closures in a press release in the local paper and by signs at the trailheads and locations where trails cross into the hunting-permitted Preserve.
15. Consent to hunt turkey with firearm in the fall (October) will not be granted on Jewett, Mt Archer or Eno Preserves.
16. Consent to firearm hunt turkey in October is restricted to Monday through Thursday on the Plimpton, Beebe, Chestnut Hill, Honey Hill and Hand Smith Preserves; hunters with consent to hunt deer with bow on these properties should be aware of this.
17. Hunters who receive consent to hunt deer with bow or shotgun/rifle/muzzleloader on Mt. Archer Woods, Eno and Jewett Preserves will not be granted consent to hunt on any other TOL/LLCT property unless no one else requests permits for those properties.
18. Hunters who receive consent to hunt deer with bow or muzzleloader on Mt. Archer Woods, Eno and Jewett Preserves shall not be granted consent to hunt with shotgun/rifle on these properties depending upon demand. However, they may be granted permission to hunt with firearm on other properties in Lyme .



TOWN OF LYME  
LYME LAND CONSERVATION  
TRUST (TOL/LLCT) HUNTING  
POLICIES 2020



LYME LAND  
CONSERVATION  
TRUST, INC.  
PO BOX 1002  
LYME CT 06371

**Requesting Consent From the Open Space Coordinator**

To request consent, mail a completed consent form (you may print and use the partly filled out samples) and a stamped return envelope to:

**Open Space Coordinator, Lyme Town Hall, 480 Hamburg Rd, Lyme CT 06371.**

If you are hunting as a group, please submit the consent forms as a group and include a large self-addressed envelope with extra postage. Emailed requests are no longer accepted.

Any questions, email: [openspace@townlyme.org](mailto:openspace@townlyme.org).

For the Spring Season, consent to hunt may be requested a month prior to beginning of the season. In the Fall, consent to hunt for all seasons and implements may be requested after August 15. Apply early. Permits will be granted as space allows. Parcel preference will be given to those who have hunted a property historically, helped with preserve maintenance and replied by email with hunting survey results. If the permit request is received after the season has started, it will be granted if space available. If we are oversubscribed, there will be a lottery. Junior license holders (persons 12 through 15 years of age) may be granted consent and must be accompanied by a licensed hunter 18 years of age or older while hunting.

**Hunting Season Chart**

**Town of Lyme and Land Trust Preserves where hunting is allowed**

Season		2020										2021						
		Jewett, ~434 ac	Mt. Archer, ~135 ac	Enc, ~100 ac	Plimpton, ~80 ac	Beebe Preserve, ~74 ac	Chestnut Hill, ~40 ac	Honey Hill, ~38 ac	Hand-Smith ~23 ac	Slawson ~55 ac	4/29 - 5/30	9/15 -	10/3 -	11/1 -	11/18 -	12/09 -	12/23 -	1/1 - 1/31
											10/2	10/31	11/17	12/08	12/22	12/31		
Deer/Turkey	Bow	✓	✓	✓	✓	✓	✓	✓	✓	✓		Mon - Thu	Mon - Thu	M - Th			M-Th	Mon - Thu
Deer	Shotgun/rifle	✓	✓	✓	✓	✓	✓	P	✓	✓				Mon - Fri				
Deer	Muzzleloader	✓	✓	✓	✓	✓	✓	P	✓	✓					Mon-Fri			
Fall Turkey	Firearm	P	P	P	✓	✓	✓	P	✓	✓		Mon - Thu						
Spring Turkey		B	✓	✓	✓	✓	✓	B	✓	✓	M-Th until noon							

✓ = Consent to hunt required

B = Bow only

P = Hunting prohibited

Yellow background: Preserve open to all; consent to hunt restricted to Monday through Thursday

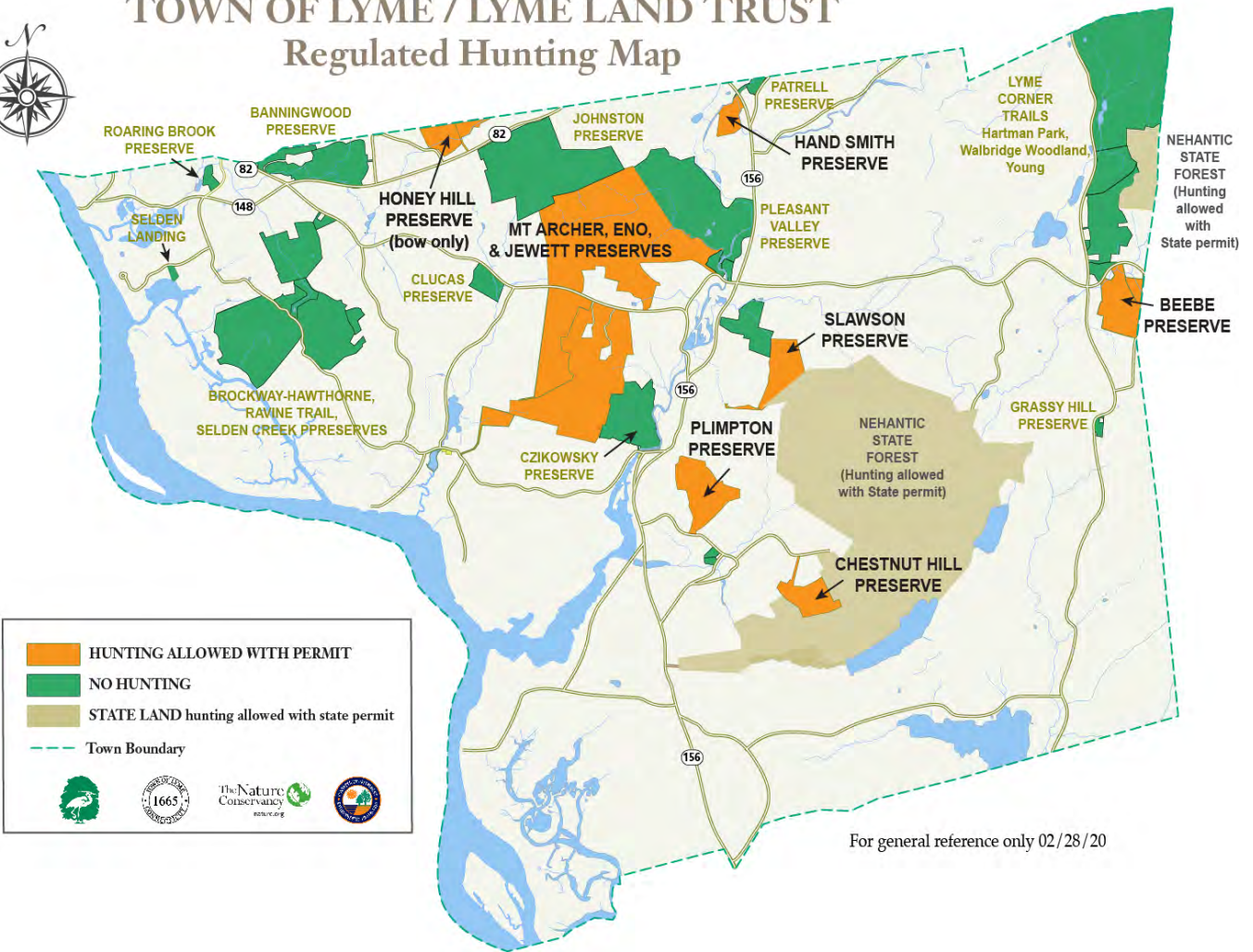
Orange background: Preserve open only to hunters Monday through Friday; open to others on Saturday and Sunday

**Note: Consent to hunt resident goose with firearm may be granted on Hand-Smith during September**





**Note: TOL/LLCT follows the State Land Muzzleloader Season Dates**

Properties in Lyme where consent to hunt may be granted under the TOL/LLCT Hunting Program.

## TOWN OF LYME / LYME LAND TRUST Regulated Hunting Map



	HUNTING ALLOWED WITH PERMIT
	NO HUNTING
	STATE LAND hunting allowed with state permit
	Town Boundary

For general reference only 02/28/20