

Non Profit Org
U.S. Postage
PAID
Permit No. 56
Lyme, CT
06371

Lyme Land Conservation Trust
PO Box 1002, Lyme CT 06371

Address Service Requested



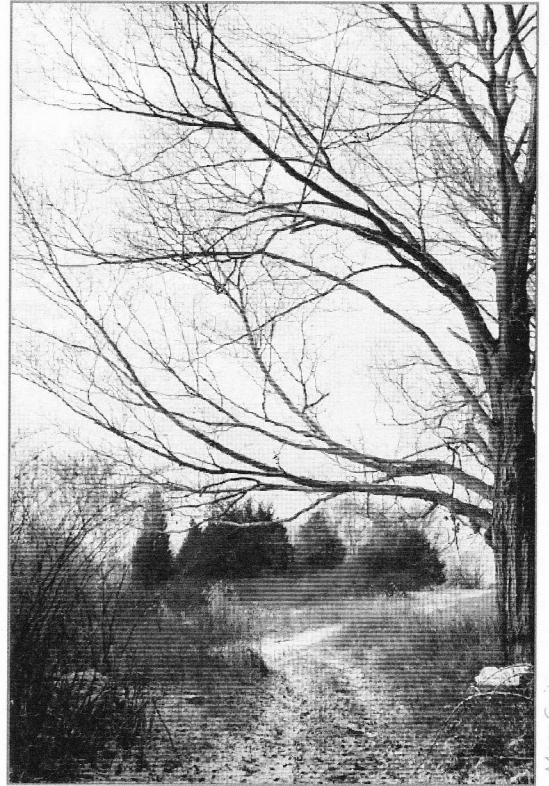
**Postal Customer
Lyme, CT**



LYME LAND
Conservation Trust

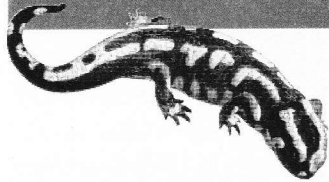
Bulletin

January 2008



Mary Guitat

Bulletin



Life Stories of CT Amphibians

On Sunday, February 10th, the Land Trust will screen a new video that provides a view of local frogs and salamanders in their native habitats. Videotaped and narrated by naturalist Brian Kleinman, "Between Land & Water" documents the life cycles of some of Connecticut's 22 kinds of salamanders, frogs and toads, including spring peepers, spotted salamanders and red efts, over an entire season.

As Herpetologist Hank Gruner describes it, "We experience the sights and sounds of each discovery: the cold rainy night march of spotted salamanders, a deafening midnight chorus of treefrogs, the springtime aquatic dance of the newt, the capture of a 'purple salamander' along a forest brook in summer."

A naturalist will be on hand to answer questions after the film, which will be shown without charge from 2:00-3:30 pm at the Lyme Public Hall.

Thanks to the "Green Crew"

Thanks to the "Green Crew", a group of students from Lyme-Old Lyme High School, for help maintaining Hartman Park on November 18: Mike Barclay, Charlotte Cipparone, Chris Crabbe, Alex Mayne, Robert Mercurio, Peter Wilczynski and Tim Wilczynski. The "Crew" together with Linda Bireley, Dick Conniff, Emily Fisher and Evan Griswold completed important trail maintenance that included replacing a bridge, cutting and clearing several "hazard" trees, trimming brush and enhancing the trail markers. Many hikers will enjoy the benefits of their contribution.

Device Installed to Deter Beaver Damage

This November, a water flow control device (WFCD) was installed at the Joshua Pond Fishway located on Lower Pond (a.k.a. Joshua Pond) at the intersection of Joshuatown and Brockway Ferry Roads. The fishway, pond and dam are owned and monitored by the Lyme Land Conservation Trust (LLCT). Debris created by the ever-present beavers has been an ongoing problem as the resulting ladder blockages impede fish passage, and spillway blockages cause water to overtop and erode the earthen dam. Despite daily monitoring to remove debris, fish passage during the migrating season (April – May) is hindered and the dam is exposed to further damage.

Laurie Hoyt, Lead Steward for the fishway, began researching the problem early this year by contacting Connecticut DEP Eastern District Headquarters. She was referred to Skip Hilliker, a Beaver Consultant with the Humane Society of the United States (HSUS), who helped design a system that, while allowing beaver to continue their normal activity would permit fish passage and protect the dam by maintaining the desired pond water level. According to the HSUS, the technology works by circumventing the beavers' natural instinct to plug holes where they hear and feel the flow of water.

Following several meetings with Skip Hilliker, the LLCT accepted a proposal from the HSUS to install the device. Shortly after, project funding was approved by the LLCT and in October, a permit was secured from Lyme's Inland Wetlands Commission.

Connecticut DEP Fisheries views the WFCD as an opportunity to help targeted fishes, such as alewife, better utilize the Joshua Pond Fishway. If successful, the application may be employed at other fishways experiencing similar problems.



Sean Guinan, Urban Wildlife Program Coordinator, HSUS, with Lyme Open Space Coordinator Linda Bireley.

The WFCD will require daily maintenance during the migrating season and weekly maintenance during the non-migratory season. If you desire additional information regarding the device, please contact Sean Guinan (HSUS) at 203-389-4411. In addition, if you would like to assist with maintenance, please contact Laurie Hoyt, Lead Fishway Steward at 860-526-5798. Our hope is that this device will enhance fish passage and protect the dam from more damage in the future.

100-Acre Conservation Easement Purchased

Noted conservation attorney Fritz Gahagan, working with both the Ingersoll family and the Lyme Land Trust, recently crafted a plan to preserve approximately 100 acres of land off Gungy Road owned by the Ingersoll family. This easement secures an important piece of a protected corridor which now extends from Rte 156 to Gungy Road.

The LLCT purchased the 100-acre easement for

\$175,000, a cost far less than buying the land. In exchange, two of six possible building lots will be extinguished in a subdivision plan to be submitted for approval and four will be carefully situated west of the pond.

Two conservation investors will put up half the funds necessary to prepare for and seek subdivision approval as well as construct the common road. They will each receive a lot and the Ingersolls will retain two.

Funding for this easement acquisition came from our Acquisition Fund, money previously donated by generous members and supporters of the Trust.



On Saturday, December 10, a work party from Lyme and East Haddam came out in force to cut trails on the Patrell property off Baker Lane. (More information about the property, and a trail map will be provided in the March Bulletin.) Left to right: John Rozum, Bernie Gillis, Linda Bireley, Rob Smith, Parker Lord, George Giesey, Kiernan Wholean, Diana Boehning, Bill Boehning. Not pictured Ed Bireley, Mary Guitar.



Second Saturday Series

Our Second Saturday Series continues with walks led by directors and former directors of the LLCT board on one of their favorite trails in Lyme. All walks are held rain or shine. In the event of severe weather, please contact the number below for confirmation of event. For further information about location of properties, see Trails and Properties page on our website at www.lymelandtrust.org.

Sunday, February 10th, 2:00 – 3:30 pm

(please note Sunday)

Screening of "Between Land and Water: Life Stories of Connecticut's Amphibians."

Free. Note: film is 45 minutes, followed by questions period and refreshments. See details inside.

Saturday, March 8, 10:00 am

Plimpton Preserve with Mary Guitar and Peter Weigel

Come see the beautiful views of the Plimpton Preserve while the leaves are still off the trees. Please park on Stone Post Rd, off of Sterling Hill Rd.

Saturday, April 12, 10:00 am

Moulson Pond Fish Ladder with Linda Bireley

Located on Mt. Archer Rd near Rt. 156. Please park at the 8-Mile Cemetery on Mt. Archer Rd. Bring polarized sunglasses if you can; they allow for better fish viewing.

Saturday, May 10 at 10:00 am

Amphibian Walk with Ed Natoli in Pleasant Valley Preserve

This walk is great for all ages and includes exploring the wetlands of Pleasant Valley for amphibians. It will be held rain or shine; please wear clothing appropriate for the weather and good outdoor shoes. The walk will be 2 miles total in length.

Saturday, June 14 at 10:00 am

Off-Trail Hike on Gahagan Land with Tony Irving and Fritz Gahagan

Please join us for an exciting off-trail walk through varied habitats that will include Ed Bill Pond, the East Branch of the 8-Mile River, mixed forest and rocky ledges from which the mouth of the CT River and the Long Island Sound can be seen on a clear day. This hike will be 2-3 miles in length, off-trail and over some moderately rugged terrain. Please wear appropriate footwear and bring water and snacks. This hike will last 3-4 hours. Meet under the power lines on Salem Rd, across from the cemetery.

Are You a Member?



Please note that receiving this newsletter does not mean your membership is current: we provide the newsletter as a service to all residents of Lyme. We count on your membership support for continuing our programs. Our memberships (\$10 individual; \$20 family) run from June to the following July. If you're not sure if your membership is current, please contact us at Tom.Shoemaker@gmail.com. If you'd like to sign up or renew, go to our website: www.lymelandtrust.org and hit the "Membership" link. Thanks!

For further information, call Mary Guitar 434-7285 or visit www.lymelandtrust.org.