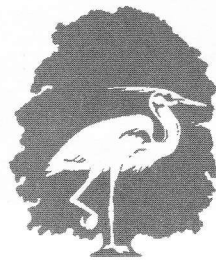


Non Profit Org
U.S. Postage
PAID
Permit No. 56
Lyme, CT
06371



LYME LAND
Conservation Trust

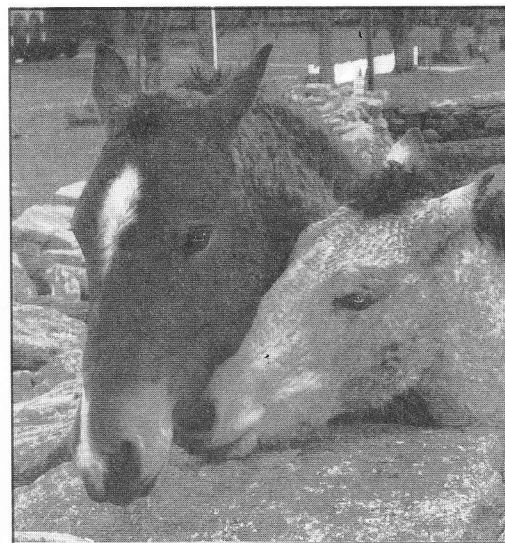
Bulletin

November 2007

Lyme Land Conservation Trust
PO Box 1002, Lyme CT 06371

Address Service Requested

Postal Patron



Friends Forever

Jasmine Bazinet

Bulletin

New Water Control Gate to Enhance Fish Passage

This past June the water control gate that supplies water to the Moulson Pond fishway was replaced. A gate that opened up from the bottom was replaced with one that pivots vertically. The old gate blocked the upper part of the water column, while the new gate leaves the entire water column available for fish passage.

The project started several years ago when Linda Bireley, Lyme Fishways Coordinator, discussed the blocked water column with Connecticut DEP Fisheries. Both agreed that the solution would be to replace the gate. A local engineering firm, Kleinschmidt, engineered, designed and estimated the cost to replace the gate. The estimated cost to manufacture and replace the gate was over \$100,000 and the CT DEP and the National Fish and Wildlife Foundation were able to financially support the project. No permits were needed, so last fall another local company, Machnik Bros. procured the 4 x 8 ft, 3000 lb gate from Rodney Hunt.

In April, Ben Gahagan helped set up a recording video camera to capture fish swimming through the existing gate between the hours of 7 pm and midnight; the recording continued through May. Valinn Ranelli is currently reviewing these tapes and counting the numbers of fish passing through the gate. This video recording will be repeated during the spring of 2008. In June 2007, the water canal was drained and 2-3 feet of mud and debris removed by a group of volunteers. Machnik prepared the canal, installed the new gate, tested it and removed the old gate. The new gate



Will Davidson and John Mahan, workers for Machnik Bros, guide the new water control gate into place.

will ensure the Eightmile River remains free flowing and supports the passage of migratory fish.

Financial support to enhance this fishway, ensuring its continued ability to pass migratory fish in and out of the Eightmile River watershed, was provided by:

- Long Island Sound Study and National Fish and Wildlife Foundation with funding support from United States Fish and Wildlife Service, National Oceanic and Atmospheric Administration, and the Shell Marine Habitat Program.
- Long Island Sound Fund administered by the Connecticut Department of Environmental Protection (DEP) through the sale of Long Island Sound license plates and contributions by Individual donors.



Forest Stewardship Plan in the Works for the Eno Preserve

The Stewardship Committee of the Land Trust recently reviewed proposals from several consulting firms for development of a 10-year Forest Stewardship Plan for the 101-acre Chan Eno Preserve. The firm EECOS (Ecological and Environmental Consulting Services, Inc.) was selected for the work, based on experience and costs. These costs will be partially offset by a grant from the Forest Land Enhancement Program, sponsored by the state.

The aim of the plan will be to conduct a basic forest inventory and, in consultation with the Preserve's owners and stakeholders, to set goals and objectives for its management over the next ten years. An important focus will be the intersection of natural resources and proposed land use and how land use can be informed by the natural resources in a way that protects these resources.

The plan will include information about general forest health, habitat, and site conditions. Objectives will be developed for management of timber, alien species, and wildlife, including deer. It will also examine wetlands resources, forest diversity, and public access.

As board members noted during the discussion, Lyme is fortunate to have considerable expanses of unfragmented forest. The Eno parcel is in a strategic location with respect to other open space parcels in town, and functions in relationship with them. This proposal will provide important knowledge to foster these interconnections.

Towns Work Together to Acquire Patrell Property

The Town of Lyme and the Lyme Land Trust worked together to acquire 5 acres of the Patrell property, located in Lyme near the East Haddam border. The town of East Haddam, working with their Land Trust acquired an adjoining 45 acres, after a town vote unanimously favored the purchase. The Nature Conservancy played a critical role in negotiating the terms of the purchase as well as providing 15% of the overall funding. The closing took place on August 27th and all concerned acknowledged the generosity of the Patrell family in agreeing to a bargain sale to make preserving their land possible.



Tired but happy hikers after our 6-mile ramble on September 8th. Marta Cone led us cross-country from Pickwick's Preserve through Mt Archer Woods and the Jewett Property, ending at the Pleasant Valley Preserve. Now that we know the way, many of us are planning to do it again soon!



SECOND SATURDAY WALK SERIES

Our Second Saturday Series continues with walks led by directors and former directors of the LLCT board on one of their favorite trails in Lyme. All walks are held rain or shine. In the event of severe weather, please contact the number below for confirmation of event. For further information about location of properties, see Trails and Properties page on our website at www.lymelandtrust.org.

Sunday, February 10th, 2:00 – 4:00 pm

(please note Sunday)

Screening of "Between Land and Water: Life Stories of Connecticut's Amphibians."

This new documentary was taped entirely in Connecticut and documents the life cycles of native amphibians over an entire season. Come follow native frogs and salamanders through spring migration, mating season and their developmental stages, as they grow and reproduce in their native ecosystems. Naturalist Brian Kleinman, who taped and narrates the film, will be on hand to answer questions after the film. This film is a great learning experience for the whole family.

Saturday, March 8, 10:00 am

Plimpton Preserve with Mary Guitar

Come see the beautiful views from the Plimpton Preserve before the leaves obscure the panorama. Please park across from the Preserve entrance on Sterling City Road, or at the beginning of Stone Post Road.

Saturday, April 12, 10:00 am

Moulson Pond Fish Ladder with Linda Bireley

Located on Mt. Archer Rd near Rt. 156. Please park at the Eight-Mile Cemetery on Mt. Archer Rd. Bring polarized sunglasses if you can; they allow for better fish viewing.

Saturday, May 10

Amphibian Walk with Ed Natoli in Pleasant Valley Preserve

More information to be announced in the LLCT Winter Bulletin.

Saturday, June 14 at 10:00 am

Off-Trail Hike on Gahagan Land with Tony Irving and Fritz Gahagan

Please join us for an exciting off-trail walk through varied habitats that will include Ed Bill Pond, the East Branch of the Eight-Mile River, mixed forest and rocky ledges from which the mouth of the CT River and the Long Island Sound can be seen on a clear day. This hike will be 2-3 miles in length, off-trail and over some moderately rugged terrain. Please wear appropriate footwear and bring water and snacks. This hike will last 3-4 hours. Meet under the power lines on Salem Rd, across from the cemetery.

Would you like to receive email notices concerning upcoming LLCT and related events? To be added to our update list, please contact us at Tom.Shoemaker@gmail.com

For further information, call Mary Guitar at 434-7285 or visit www.lymelandtrust.org