

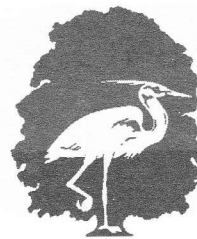


Lyme Land Conservation Trust
PO Box 1002, Lyme CT 06371

Address Service Requested

Postal Patron
Lyme, CT

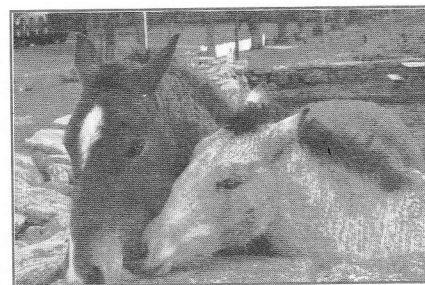
Non Profit Org
U.S. Postage
PAID
Permit No. 56
Lyme, CT
06371



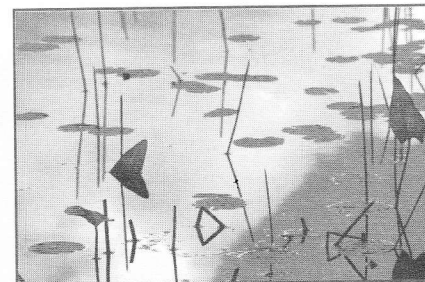
LYME LAND
Conservation Trust

Bulletin

May 2007



Jasmine Bazinet, Oakdale



Richard Goodyear, Lyme



Joan Meek, Old Lyme

Bulletin

Update on Moulson Pond Fishway Repairs

Several years ago, we initiated work to the Moulson Pond Fishway to repair leaks, replace a water control gate, and divert fish away from the hydro unit. We decided to complete one project at a time. Last year we repaired the leaks with grant money from the National Fish and Wildlife Foundation (NFWF).

This year we had Kleinschmidt engineer and design the gate replacement. We applied for and received grant awards from CT DEP and NFWF to cover this work, requested proposals from three local companies, and selected Machnik to complete the work. Machnik obtained shop drawings from the gate manufacturer Rodney Hunt, and Kleinschmidt reviewed the shop drawings, forwarding comments back to Rodney Hunt. Rodney Hunt incorporated the



On Saturday April 14, 2007, President Linda Bireley (5th from right) led a group to tour the Moulson Pond Fishway. Although, the day was spectacular, the water had been too cold for the expected run of river herring to make an appearance. Maybe next year!

comments and began to manufacture the gate. The gate should be shipped mid-May and we have scheduled installation in June.

During this fish passage season we are videotaping fish as they pass through the existing gate opening and we will compare those results with those we collect next year with the new gate in place. Ben Cahagan has been extremely helpful in creating an experimental protocol and helping to procure (beg & borrow) the needed equipment. .

Phragmites Removal in Joshua Creek

In November 2005, The Lyme Land Conservation Trust partnered with abutting land owners Mr. and Mrs. Frederick Pickering and Mr. and Mrs. Parker Handy to remove invasive plant species from the marsh around the Joshua Creek (aka Rams Horn Creek). At the beginning of the project, the contractor, All Habitat Services, LLC, applied the aquatic herbicide Rodeo® (glyphosate) to the *Phragmites* and other invasive species such as Multiflora Rose, Asiatic Bittersweet, Black Locust and False Indigo which were also growing in the wetland and along the upland interface.

In the spring of 2006, the dead stems were mulched with a low ground pressure mower. This mowing restored a long-lost view of the creek and the Connecticut River in addition to numerous ecological benefits including improved access for increased wildlife use and increasing sunlight to suppressed native plants. By early summer, the native plants were showing increased vigor and suppressed grasses,



The invasive reed, *Phragmites* spp. is abundant in the marsh before treatment.



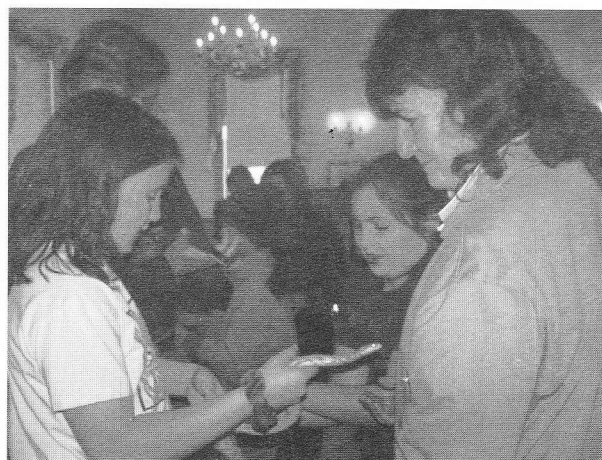
Panoramic view of the Marsh after treatment.

sedges and rushes were thriving and spreading. The dominant Sweet Flag patches on both sides of the creek have expanded significantly and Wild Rice is now delightfully abundant along the banks of the creek.

In June 2006, *Phragmites* re-growth, covering

approximately 25% of the site, was treated with the aquatic herbicides Habitat® (Imazapyr) and Renovate3® (Triclopyr) and cut down in the fall. The 2007 growing season begins the early detection and rapid response (EDRR) phase of the project. The site will be monitored for *Phragmites* re-growth and the appearance of other opportunistic invasive species for treatment with limited spot herbicide applications as necessary. This is also the time for evaluation of the native plant community recovery to determine if a planting enhancement is desired. The Lyme Land Conservation Trust will incorporate the ED RR activities in this parcel's long-term management plan, beginning in 2008.

Thanks to David Roach of All Habitat Services LLC for supplying this article and accompanying photos of the project.



Linda Krulikowski makes some introductions at her talk on local snakes in February.



CALENDAR OF UPCOMING EVENTS

LYME LAND CONSERVATION TRUST

SUMMER 2007

SECOND SATURDAY WALK SERIES

Our Second Saturday Series continues this spring with walks led by directors and former directors of the LLCT board on their favorite trails in Lyme. All walks are held rain or shine. For further information about location of properties, see Trails and Properties page on our website at www.lymelandtrust.org.

Sunday, June 3rd, 2:00pm, LLCT Annual Meeting

Annual Meeting, 195 Joshuatown Rd.

Saturday, June 9th, 10:00 am

Pleasant Valley with Mike Richardson. History and Ecology.

Meet at trail entrance on Macintosh Road, off Rt. 156.

Sunday, June 10th, 12:30pm,

Dedication of the Grassy Hill Preserve

Dedication of the new Preserve and a tour of the fields, followed by refreshments. Parking at the Grassy Hill Congregational Church. (All are welcome at services at the church, beginning at 10:00.) Contact Ning Rich, 434-7091, for further information.

Saturday, July 14th, 10:00 am

Pickwick's Preserve to Mt. Archer, with George Moore. An easy hike designed for walkers who would like to take it slow. Park approximately 1/4 mile down the dirt road at #183 Joshuatown Road. 1/2 mile walk through the Preserve connects with the Mt. Archer Woods Red trail.

Saturday, August 11th, 10:00 am

Kayak in Lord's Cove with Susan Ballek.

There is a limit of 15 participants for this event. Please contact Susan Ballek at 434-9336 to pre-register, and for further information.

Saturday, September 8th, 10:00 am

A Cross-Country Hike from Pickwick's Preserve through Mt. Archer Woods, the Jewett Property, and ending at the Pleasant Valley Preserve with Marta Cone.

This is a long, through hike; we will have a van pick-up at one end. Further details to be forthcoming.

Saturday, October 13, 10:00 am

Gerber and Slossen Properties with Don Gerber and Emily Fisher.

This walk will include a comparison of forestry management styles on the two properties. If the weather has been wet, please wear waterproof footwear. Information on parking and starting location will be forthcoming in the August Bulletin.

Saturday, November 3, 10:00 am (please note, first Saturday on the month)

Selden Park Preserve with Matt Elgart.

This walk will include beautiful views of the Connecticut River. Parking at Selden Creek Preserve lot on Joshuatown Road

For further information, call Mary Guitar at 434-7285 or visit www.lymelandtrust.org

Would you like to receive email notices concerning upcoming LLCT and related events?

To be added to our update list, please contact us at tom.shoemaker@gmail.com