

Non Profit Org
U.S. Postage
PAID
Permit No. 56
Lyme, CT
06371



LYME LAND
Conservation Trust

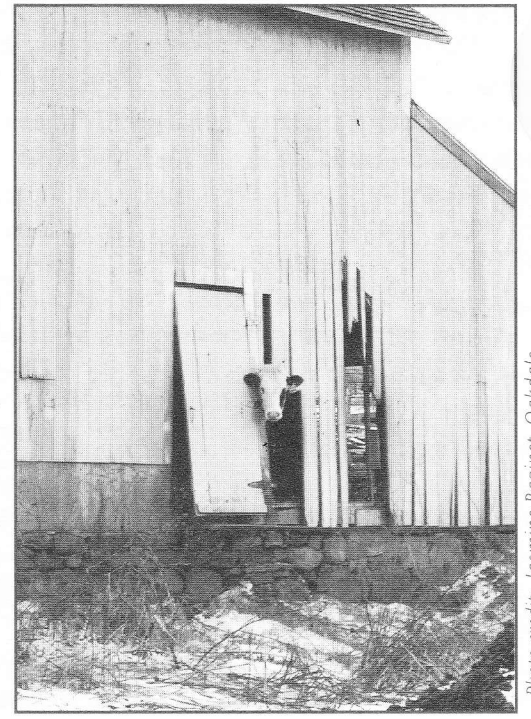
Bulletin

November 2006

Lyme Land Conservation Trust
PO Box 1002, Lyme CT 06371

Address Service Requested

Postal Patron
Lyme, CT



"Who's There"

Photo credit: Jasmine Bazinet, Oakdale

Bulletin

Eightmile River Wild and Scenic Coordinating Committee: Fall 2006 Update

By Sue Merrow

Last spring, ten years of effort culminated in the citizens of the three towns of the Eight Mile River watershed: Lyme, Salem and East Haddam, voting overwhelmingly in support of the Watershed Management Plan and Draft Study Report and for seeking federal Wild and Scenic Designation for the Eight Mile River. The U.S. Congress will take up our request for designation in 2007.

Though much has been accomplished, more work remains to be done. Final copies of the Watershed Management Plan and Draft Study Report have been printed and distributed to town halls and libraries. The committee structure has been transformed from the study phase and now reflects the coordination needed for the final phase of the project. The resulting Coordinating Committee is tackling outreach, education, implementation of management tools, science and research. Each of the three towns is moving forward with implementing the Management Plan; East Haddam has adopted riparian overlay protection, an important tool identified in the Plan, and Salem and Lyme are refining their plans for Planning and Zoning consideration. East Haddam also recently voted at Town Meeting to authorize purchase of a critical 117 acre piece of watershed property.

If you would like to become involved, please visit the website www.eightmileriver.org or call 860-345-8700. And please go out and enjoy this remarkable and beautiful place right in our backyards.

Ravine Trail Hike: A Slice of Tectonic History

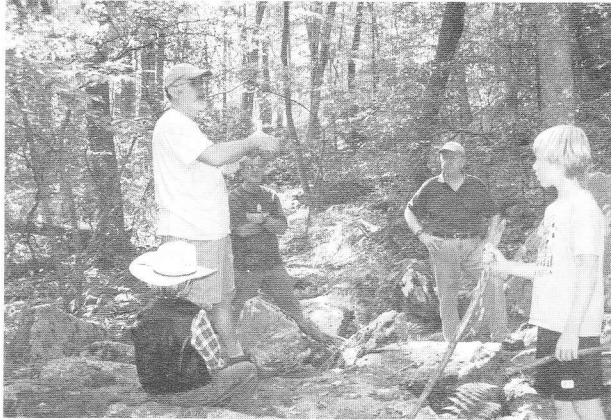
On Saturday, September 9th, former state geologist Ralph Lewis led a group of hikers on the Ravine Trail off Joshuatown Road. This trail cuts through an area that typifies the unique landscape of southeastern New England, east-west trending bedrock ridges cut by north-south fractures.

Unlike other areas of Connecticut, Ralph explained, Southeastern Connecticut was once part of a small continent called Avalonia (440-350 million years ago), which collided with the North American Plate, and through heat and compression, a small crinkle in the bedrock fabric developed east-west rock alignments. The rocks of Avalonia have been pushed under the rocks of the Iapetus Ocean along the east west trending Honey Hill Fault. As the Atlantic Ocean widened, from 200 million years ago to the present, part of Avalonia formed southeastern Connecticut, and another part

Wetlands

On August 12, Lyme resident Janie Davison welcomed LLCT provided unbeatable access to the marshes of Lord's Cove. LLCT director Susan Ballek through the cattails and wild rice Ferry Road. It was a beautiful summer afternoon, and plenty spotted along the paddle. The marshes in Lord's Cove have been completely filled with cattails.

A LLCT-coordinated phragmites abatement project in Whaleb mowing and herbicide treatments in 2005 and 2006; follow-up by All Habitat Services of Madison, CT. A big thank you to the



formed western Morocco. As less resistant rock was eroded by water, ice, and vegetation, stream valleys were formed with south-flowing drainage, as part of the Eight-Mile River watershed. The Ravine Trail is a window into this tectonic history.

Notes

members onto her property at Lord Creek Farm, which a small group of canoeists and kayakers followed Janie and exploring their way up a small creek which ended near Ely's of osprey, red-winged blackbirds and belted kingfishers were been restored through phragmites abatement and are now

one Creek is nearly complete. There were combinations of treatments will be made in 2007, if needed. The work was done surrounding property owners who sponsored the restoration.

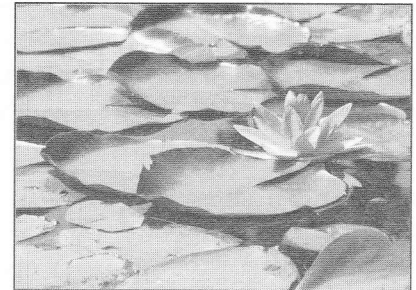


PHOTO CONTEST

The Lyme Land Conservation Trust, Inc. and The Old Lyme Conservation Trust, Inc. are seeking the best amateur photos taken in Lyme and Old Lyme.

Judges will award \$100, \$50, and \$25 cash prizes for the following categories:
Landscapes/Waterscapes - Plants
Wildlife - Cultural/Historic
and Young Photographers, below age 15.

OUR JUDGES

William Burt: Naturalist, Wildlife Photographer, and Author. John Mitchell: Former Sr. Environment Editor at National Geographic and Author. Nancy Stula, Ph.D.: Curator and Deputy Director of the Lyman Allyn Art Museum

GENEROUS SUPPORT PROVIDED BY

Annemarie Bellenoit of Prudential CT Realty
Citizens Bank • Essex Savings Bank • Lorensen Toyota
Oakley/Wing Group at Smith Barney • Pfizer, Inc.

For questions, entry forms and contest rules, contact us at: lymeoldlymephotos@yahoo.com or visit us at www.olct.org.

Submission deadline:
January 31, 2007



SECOND SATURDAY WALK SERIES

Our Second Saturday Series includes several events this winter: a film and food social on the second Saturday in January and a family-oriented presentation on the second Sunday in February. See below for further details. Our Second Saturday Series will continue into the spring with walks led by directors and former directors of the LLCT board on one of their favorite trails in Lyme. All walks are held rain or shine. For further information about location of properties, see Trails and Properties page on our website at www.lymelandtrust.org

Saturday, January 13th, 4:00 to 6:00 pm

A Film and Food Social, Hadlyme Hall

Join us for the engaging family drama "Fly Away Home," along with snacks and drinks from local farms and businesses.

Sunday, February 11th, 2:00 to 4:00 pm

Talk on Snakes by Linda Krulikowski, Lyme Public Hall

(*Note that this is a Sunday, not a Saturday.) Local snake expert, Linda Krulikowski, will share a program on snakes for the whole family which includes a slide show and hands-on interaction with snakes.

Saturday, March 10, 10:00 am

Extended Ravine Trail Walk with Rod Duxbury.

Exploring Stone Walls. Meet at Rod Duxbury's house: 17 Ferry Rd, Hadlyme.

Saturday, April 14, 10:00 am

Moulson Pond Fish Ladder with Linda Bireley. Located on Mt. Archer Rd. near Rt. 156. Please park at 8-Mile River Cemetery on Mt. Archer Road. Bring polarized sunglasses if you can; they allow for better fish viewing.

Saturday, May 12, 10:00 am

Honey Hill Preserve with Tony Irving. Identification of trees and shrubs. On Clark Road, approximately 200 yards from Rt. 82.

Saturday, June 9, 10:00 am

Pleasant Valley with Mike Richardson. History and Ecology. Meet at trail entrance on Macintosh Road, off Rt. 156.

Saturday, July 14, 10:00 am

Pickwick's Preserve to Mt. Archer, with George Moore.

An easy hike designed for walkers who would like to take it slow. Park approximately 1/4 mile down the dirt road at #183 Joshuatown Road. 1/2 mile walk through the Preserve connects with the Mt. Archer Woods Red trail.

Saturday, August 11, 10:00 am

Kayak in Lord's Cove with Susan Ballek. There is a limit of 15 participants for this event. Please contact Susan Ballek at 434-9336 to pre-register, and for further information.

Saturday, September 8, 10:00 am

A Cross-Country Hike from Pickwick's Preserve through Mt. Archer Woods, the Jewett Property, and ending at the Pleasant Valley Preserve with Marta Cone. This is a long, through hike; we will have a van pick-up at one end. Further details in future Bulletins.

Would you like to receive email notices concerning upcoming LLCT events? To be added to our update list, please contact us at geosails@sbcglobal.net.

For further information, call Mary Guitar at 434-7285 or visit www.lymelandtrust.org