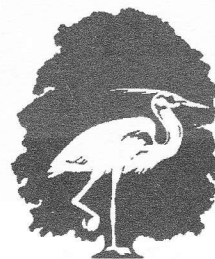


Non Profit Org  
U.S. Postage  
PAID  
Permit No. 56  
Lyme, CT  
06371



Lyme Land Conservation Trust  
PO Box 1002, Lyme CT 06371

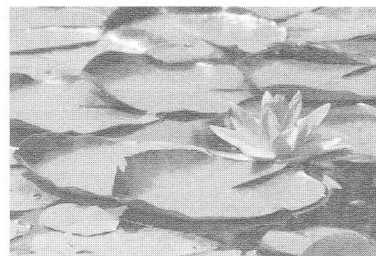
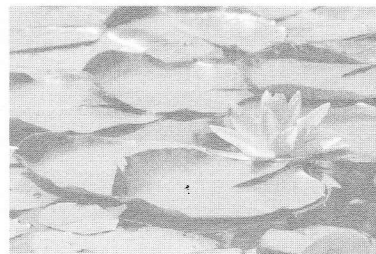
*Address Service Requested*



LYME LAND  
Conservation Trust

# Bulletin

May 2006



*Photo credit: Jeri Sullivan*

# Bulletin

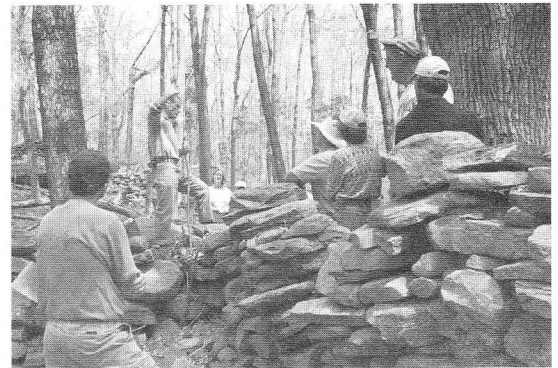
## Every Stone Has A Story

On May 23, Dr. Robert Thorson, Professor of Geology at the University of Connecticut, Hartford Courant columnist, and coordinator of the Stone Wall Initiative, spoke to a standing-room-only audience at the Lyme Public Hall on "Stone Walls of New England: History and Conservation". "Every stone and every wall has a story," Dr. Thorson said, "and help the landscape come alive." Stone walls lend a sense of scale to nature, framing fields and adding an element of classical beauty to our surroundings.

Dr. Thorson deplored the recent trend for strip-mining stone walls from this area and sending them out of state, saying that it was leading to a loss of regional identity and was one sign of the increasing homogenization of America. We are trading archaeology for architecture, habitat for decoration, and hands-on education for classrooms, he said, and suggested that abandoned walls should be left alone, and any new wall building should employ quarried stone.

Dr. Thorson has written three books on stone walls: "Stone by Stone: The Magnificent History in New England's Stone Walls," which was the winner of the 2003 Connecticut Book Award for Nonfiction, "Exploring Stone Walls: A Field Guide to New England's Stone Walls," and the award winning illustrated children's book, "Stone Wall Secrets."

The program was co-hosted by the Land Trust and The Lyme Public Hall and supported by the Rufus Barringer Resource Education and Protection Fund.



*On May 6th, State Archeologist Dr. Nicholas Bellantoni showed a group of walkers the ruins of an early eighteenth-century farmstead in the Mt. Archer Woods Preserve. He pointed out remnants of houses, barns, and sheds, as well as pasture stonewalls lining the paths of colonial road systems.*

## Hearty Souls Brave Rain for Fish

Eleven people braved the rain on April 8th 2006 to learn more about migratory fish and the Moulson Pond Fishway. Linda Bireley started the second of the Land Trust's Second Saturday walks by explaining that the fishway had been operating since 1997 and had passed thousands of river herring to reaches of the Eightmile River above the Rathbun Dam where they could spawn. The fishway could also accommodate Atlantic salmon, American shad, various species of trout, sea-lamprey, American eel as well as resident fish. She reported that alewife, one type of river herring, had been seen earlier that week and would be present in the fishway periodically throughout April and May. They would be followed in May and June by blueback, the other type of river herring seen in the Connecticut River and its tribu-



taries. Unfortunately, when the group walked along the fishway, no fish were seen. Since then, however, fishway monitors have reported thousands of fish using the fishway and some fish have been seen spawning upstream of the dam.

## Lyme Land Conservation Trust Receives Awards

At the 23rd Annual Convocation of Connecticut Land Trusts held March 25, 2006, at Northeast Utilities, Corporate Offices in Berlin CT, the Land Trust Service Bureau recognized the Lyme Land Conservation Trust with two awards. One was the Award for Excellence in Stewardship for obtaining funding to support repairs and improvements to the Moulson Pond Fishway. The second was the Public Participation Award made to the East Haddam Land Trust, the Salem Land Trust and the Lyme Land Conservation Trust for their efforts to inform and turn out voters in recent municipal referenda that



Photo credit: Jeff Zanelli

*Linda Bireley and Betsy Morgan accepting the award for Excellence in Stewardship*

approved Congressional Wild and Scenic designation for the Eightmile River Watershed. Well over 700 voters turned out and 93% voted in favor of designation.

## Volunteer Opportunities

There are a variety of ways to get involved with the work of the Lyme Land Trust. We encourage and welcome your interest. To contact us, please visit the "Volunteer Opportunities" link on our website at [www.lymelandtrust.org](http://www.lymelandtrust.org).

- **Membership:** If you are not currently a member of the Lyme Land Trust, please consider joining us in our efforts to protect the natural resources of Lyme. Please visit our website for further information and to fill out a membership form.
- **Work Parties:** There are many properties which the Land Trust is responsible for maintaining. Work parties include a variety of tasks and all hands are welcome.
- **Educational Programs:** We are seeking individuals willing to share their expertise and experiences in a workshop or walk. If you have any ideas for a program you would like to see, please let us know.
- **Writing Articles:** We are looking for more reporters and photographers to chronicle the activities of the Land Trust.
- **IT Support:** The Land Trust can use support in using computer and other multi-media technologies.
- **Board of Directors:** Every June, the membership elects several new members to the board of directors of the Lyme Land Conservation Trust.



# CALENDAR OF UPCOMING EVENTS

LYME LAND CONSERVATION TRUST

MAY—AUGUST 2006

## SECOND SATURDAY WALK SERIES

Our Second Saturday Series includes walks led by a director of the LLCT board on one of their favorite trails in Lyme. All walks are held rain or shine. Anyone completing 5 or more of the walks will receive a LLCT tote bag for their efforts! (Please note that there are two events in June, a walk on the first Saturday of the month and a program on amphibians on the third Saturday.) For further information about location of properties, see Trails and Properties page on our website at [www.lymelandtrust.org](http://www.lymelandtrust.org).

### **Saturday, June 3rd, 10:00 AM \***

Trails Day Walk: Jewett Property with Marta Cone. Please park at the Mt. Archer Woods parking lot on Mt. Archer Rd. \* Note first Saturday of the month

### **PLEASE NOTE CHANGE OF DATES**

### **Friday, June 16th at 5:30 PM**

### **Saturday, June 17 at 8:30 AM**

### **Amphibian Collection and Monitoring Project.**

Meet at the Pleasant Valley entrance on Macintosh Rd. for both events. Ed Natoli will take us into Pleasant Valley Preserve where we will set traps in the major vernal pools and some of the streams on Friday evening. Then on Saturday morning we will meet again at Pleasant Valley to collect the traps, count the amphibians and identify them. The specimens will be submitted to the Peabody Museum at Yale for their Connecticut Amphibian Monitoring Project. For more information, please contact Marta Cone 434-0255.

### **Saturday, July 8th, 10:00 AM**

Plimpton Preserve with Mary Guitar. Please park on Stone Post Rd., entrance on Sterling City Rd.

### **Saturday, Aug 12th, 10:00 AM**

Kayak in Lord's Cove with Susan Ballek. There is a limit of 15 participants for this event. Please contact Susan Ballek at 434-9336 to pre-register and for further information.

### **Saturday, September 9th, 10:00 AM**

Ravine Trail with Ralph Lewis. Meet at Joshuatown Rd. entrance; parking at Selden Creek Preserve lot across road.

### **Saturday, October 14th, 10:00 AM**

Pleasant Valley with Mike Richardson. On Macintosh Rd, off Rt. 156.

### **October, date and time to be announced:**

Workshop: "Stewarding the Land: Skills and Information for Protection and Management." More information to come on this all-day workshop about stewarding natural resources.

### **November 11, 10:00 AM**

Winter Tree I.D. Walk in Hartman Park. Join Glenn Dreyer, Director of the Connecticut College Arboretum and Mary Guitar to learn about identifying trees without their leaves. Meet at Hartman Park entrance on Gungy Rd.

---

For further information, call Mary Guitar at 434-7285 or visit [www.lymelandtrust.org](http://www.lymelandtrust.org)