



RIVER TO RIDGETOP PRESERVES

Trails are marked with solid color blazes, except Moore Trail. Mileage is for length of trail of that color



M GEORGE AND ROSEMARY MOORE TRAIL - ~9 MILES (north of Mt Archer Road = 6 miles; south of Mt Archer Road = 2.7 miles)

Pickwick, Eno Preserves Mount Archer Woods

- AW** WHITE TRAIL 1.9 miles
- AY** YELLOW TRAIL 1.2 miles (yellow plus white = 2.8 miles)
- R** RED TRAIL 0.8 mile
- B** BLUE TRAIL 0.42 mile

Jewett Preserve

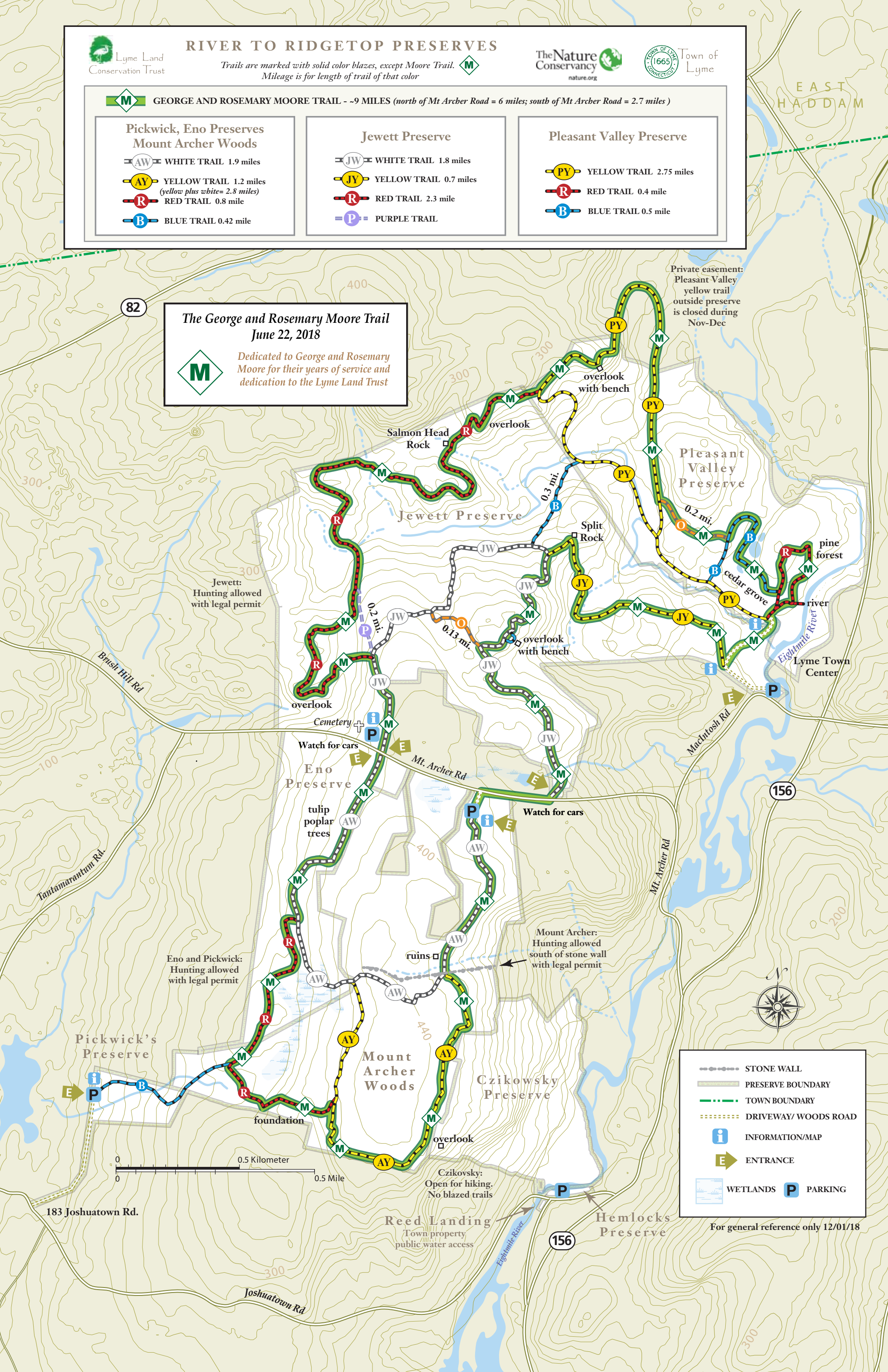
- JW** WHITE TRAIL 1.8 miles
- JY** YELLOW TRAIL 0.7 miles
- R** RED TRAIL 2.3 mile
- P** PURPLE TRAIL

Pleasant Valley Preserve

- PY** YELLOW TRAIL 2.75 miles
- R** RED TRAIL 0.4 mile
- B** BLUE TRAIL 0.5 mile

**The George and Rosemary Moore Trail
June 22, 2018**

M Dedicated to George and Rosemary Moore for their years of service and dedication to the Lyme Land Trust



Private easement: Pleasant Valley yellow trail outside preserve is closed during Nov-Dec

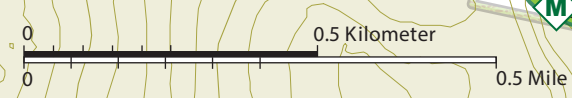
Jewett: Hunting allowed with legal permit

Eno and Pickwick: Hunting allowed with legal permit

Mount Archer: Hunting allowed south of stone wall with legal permit

Czikowsky: Open for hiking. No blazed trails

- STONE WALL
- PRESERVE BOUNDARY
- TOWN BOUNDARY
- DRIVEWAY/ WOODS ROAD
- INFORMATION/MAP
- ENTRANCE
- WETLANDS
- PARKING



For general reference only 12/01/18